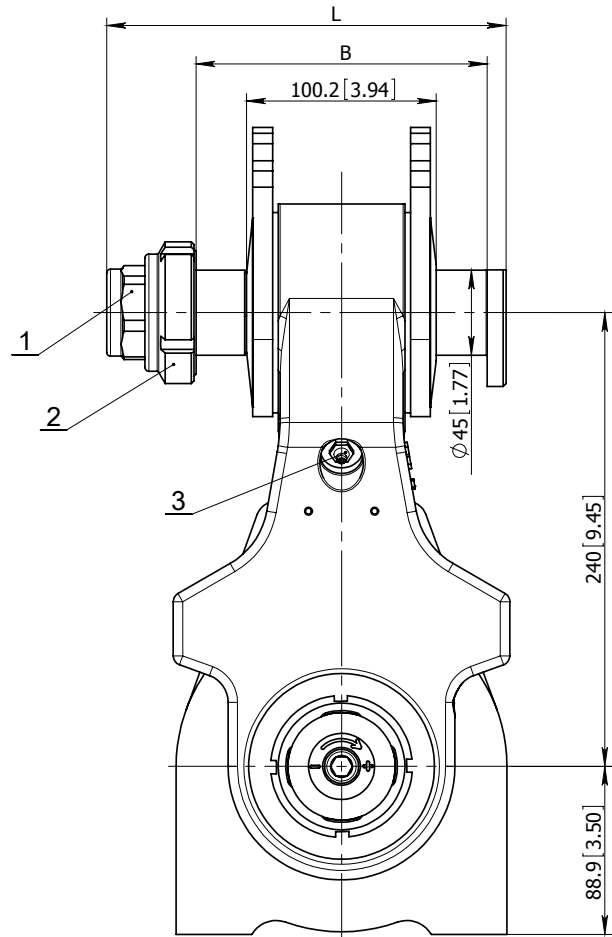
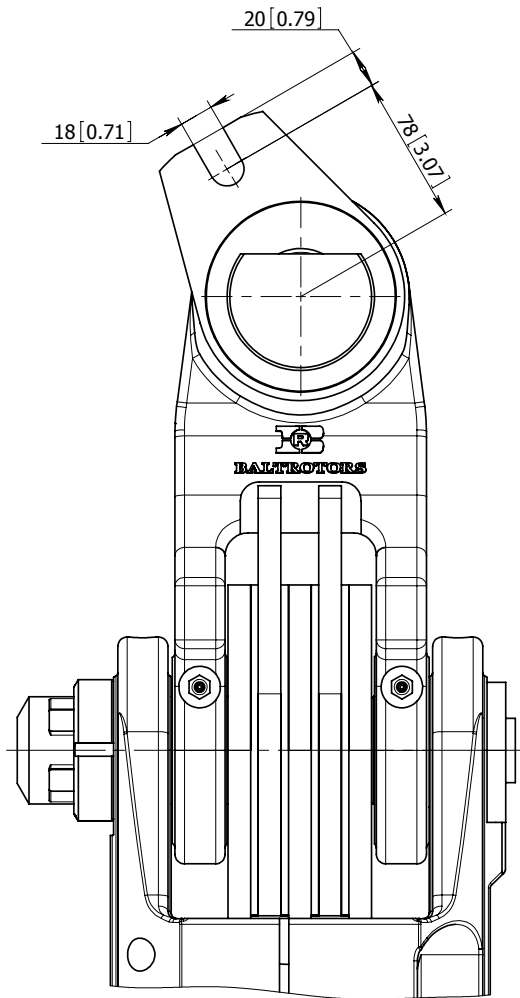


LINK BMB32KS



Link	B(mm)	L(mm)
BMB32KS-240	240 (9.49")	310 (12.20")
BMB32KS-230	230 (9.06")	300 (11.81")
BMB32KS-200	200 (7.87")	270 (10.63")
BMB32KS-190	190 (7.48")	260 (10.24")
BMB32KS-180	180 (7.09")	250 (9.84")
BMB32KS-170	170 (6.69")	240 (9.45")
BMB32KS-160	160 (6.29")	230 (9.06")
BMB32KS-150	150 (5.90")	220 (8.66")
BMB32KS-140	140 (5.51")	210 (8.27")
BMB32KS-130	130 (5.12")	200 (7.87")

Instruction manual for upper brake

To adjust the brake of the link, following actions have to be done:

- release the lock nut (pos.2)
- twist the adjusting nut (pos.1) until the disc spring starts to clamp
- tighten the adjusting nut (pos.1) at 1...1.5 turns, that will provide braking moment of 200...250 Nm (148...185 lb ft)
- tighten the lock nut (pos.2) with tightening torque 100 Nm (74 lb ft).

Grease the slide bearing and brake cones through lubricating nipple (pos.3), until some lubricant appears to the external surface.

Greasing must be repeated after every 8 working hours of the link.

NOTICE! The link is delivered ungreased. It should be well greased before taking into exploitation.

Technical data

Max load, kN	160 (35969 lbf)
Nominal braking torque of the disc brake, Nm	1200 (885 lb ft)
Max braking torque of the disc brake, Nm	1400 (1032.5 lb ft)
Weight, kg	40.7 ± 1 (89.73 ± 2.20 lb)